

Display wirelessly with Mirroring360




TO BEGIN MAKE SURE YOUR MOBILE DEVICE IS CONNECTED TO EDUROAM WIRELESS

- Wireless devices must be registered on campus network
- Wireless devices must be enrolled
- For first time enrollment connect to UNC-SETUP
- Visit wifi.unc.edu to enroll


THE UNIVERSITY of NORTH CAROLINA at CHAPEL HILL

Accessibility | Events | Libraries | Maps | Departments | ConnectCarolina | UNC Search



Wireless Configuration Portal

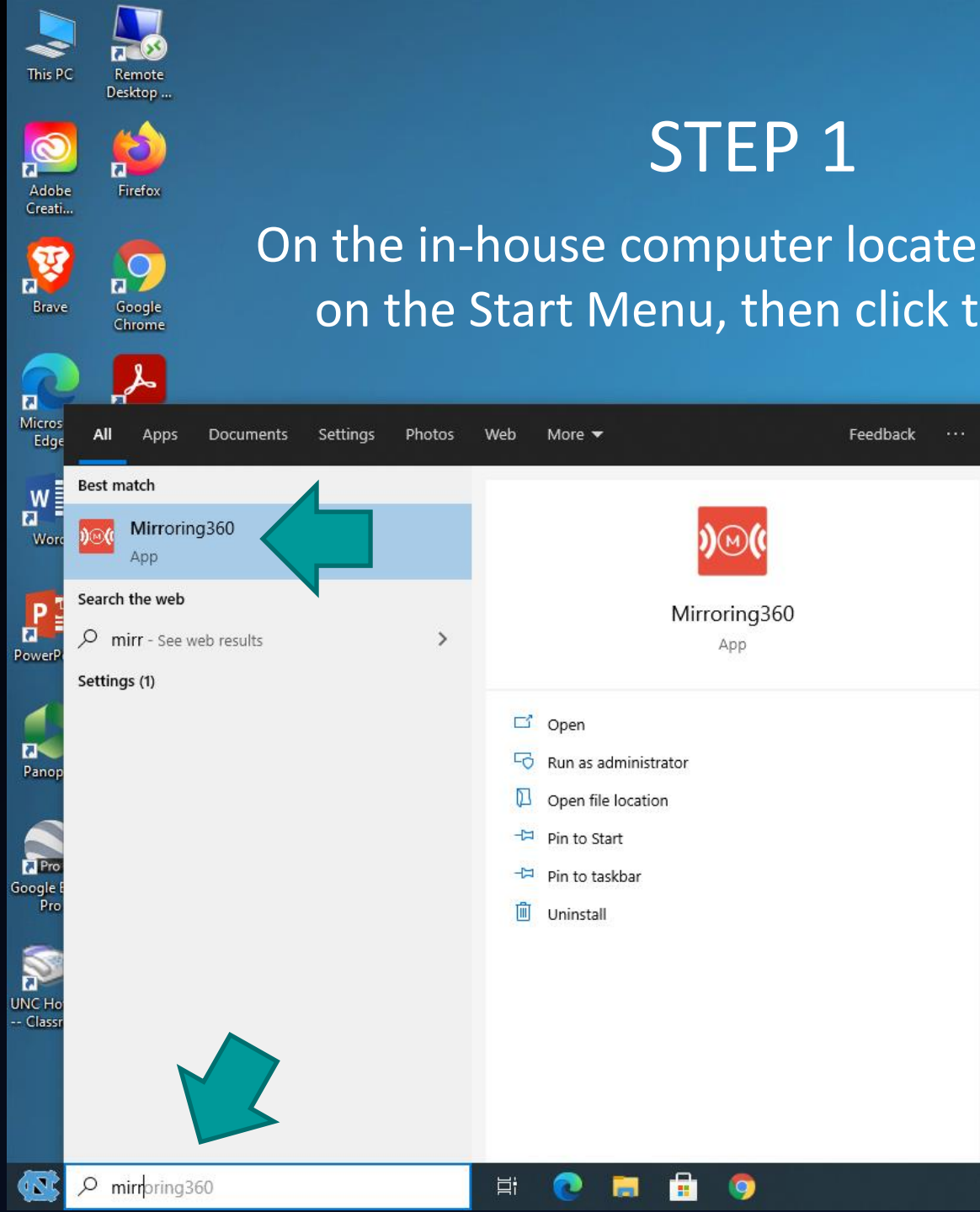
IPHONE USERS: If you are running CHROME, CLOSE IT, and REOPEN this site in Safari



[Click here to configure](#)

STEP 1

On the in-house computer locate Mirroring360 on the Start Menu, then click to launch it.



THE UNIVERSITY
of NORTH CAROLINA
at CHAPEL HILL

STEP 2

Wait until ALL three services turn green

MIRRORING360

Mirror to this screen

From

- ✓ iPhone / iPad / Mac
- ✓ Chromebook / PC
- ✓ Android

[\(Learn more\)](#)

Computer Name
CLSPE2060

Mirror with [Mirroring Assist](#)

550-583-031

[Get a new code](#)

QR

Share this screen PRO

Allow up to 40 participants to view instantly from any device, anywhere

Start Sharing

Make note of the 9 digit code (unique to each room)



THE UNIVERSITY
of NORTH CAROLINA
at CHAPEL HILL

HOW TO CONNECT



For Windows Computer or Chromebook open up the Google Chrome browser and install the **Mirroring360 Sender** Extension.



For MacBook go the following website to download **Mirroring Assist** for Mac:

<https://www.mirroring360.com/mirroring-assist>



For iPad or iPhone go to the Apple App Store and download the **Mirroring Assist** app.



For Android Device go to the Google Play Store and download the **Mirroring360 Sender Basic** app.



Windows Laptop

1. Open Google Chrome
2. Navigate to the Chrome Web Store
3. Search for the Mirroring360 sender

The screenshot shows the Chrome Web Store interface. The search bar at the top left contains the text "mirroring360 sender" and has three suggestions: "mirroring360 sender", "mirroring360", and "mirroring360 sender". The main content area features a "Featured" section with a large banner for "Kami #1 PDF App for Chrome". Below this is a "Get Started" section with a grid of extension cards: Grammarly for Chrome, Office Online, Google Hangouts, Google Keep Chrome Extension, Momentum, LastPass: Free Password Manager, Pinterest Save Button, and Full Page Screen Capture. The bottom of the page shows "New & Updated Extensions". The browser's address bar shows the URL "https://chrome.google.com/webstore/category/extensions". The system tray at the bottom right displays the time "9:31 AM" and date "10/23/2017".

mirroring360 sender X

Extensions

1 of 1 Extension Results

« Home

- Extensions
- Themes
- Apps

FEATURES

- Runs Offline
- By Google
- Free
- Available for Android
- Works with Google Drive

RATINGS

- ★★★★★
- ★★★★★ & up
- ★★★★★ & up
- ★★★★★ & up



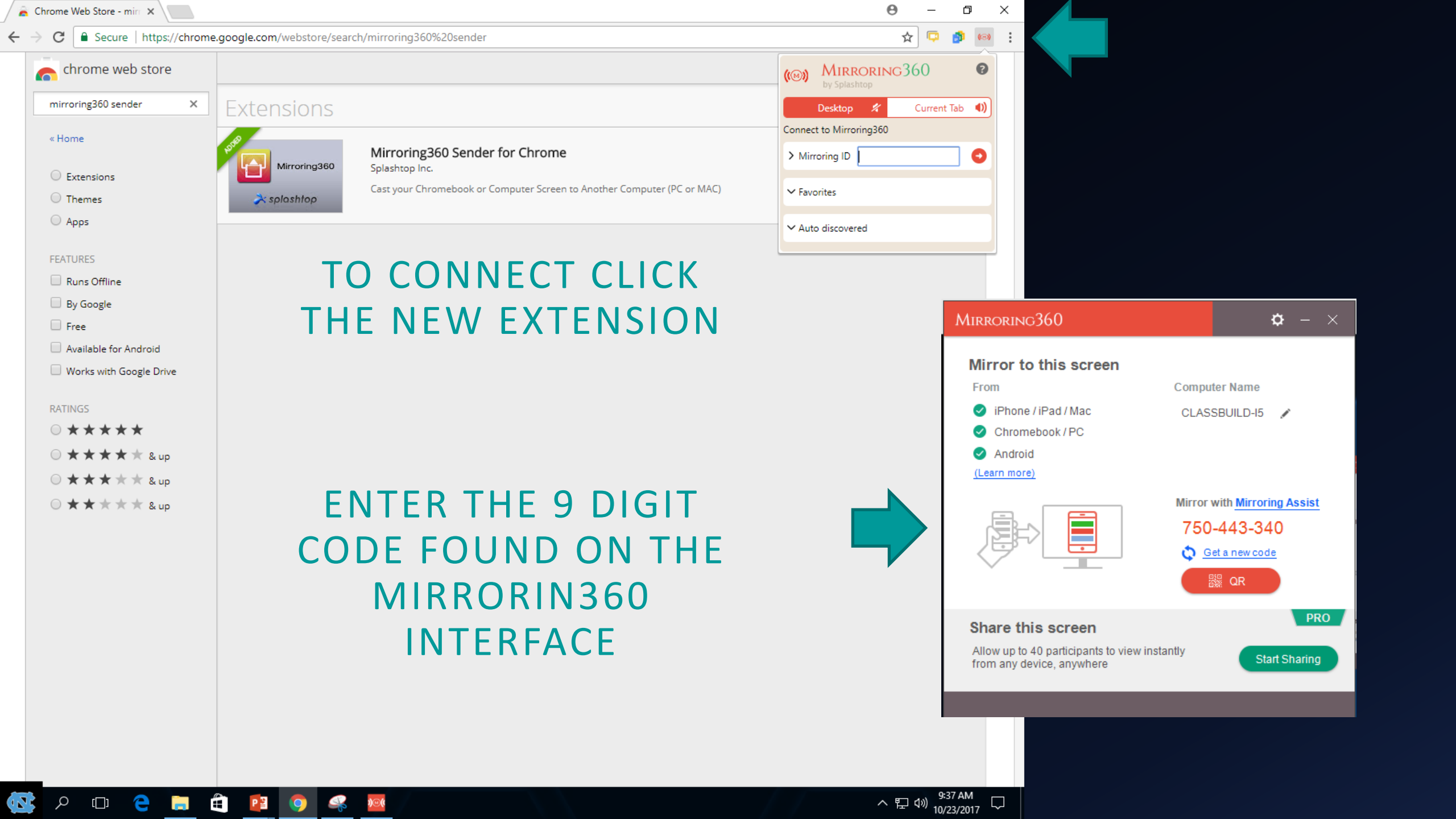
Mirroring360 Sender for Chrome
Splashtop Inc.
Cast your Chromebook or Computer Screen to Another Computer (PC or MAC)



+ ADD TO CHROME

Productivity
★★★★★ (120)

ADD EXTENSION TO CHROME



TO CONNECT CLICK
THE NEW EXTENSION

ENTER THE 9 DIGIT
CODE FOUND ON THE
MIRRORIN360
INTERFACE

MIRRORING360
by Splashtop

Desktop Current Tab

Connect to Mirroring360

> Mirroring ID

▼ Favorites

▼ Auto discovered

MIRRORING360

Mirror to this screen

From

- iPhone / iPad / Mac
- Chromebook / PC
- Android

[\(Learn more\)](#)

Computer Name
CLASSBUILD-15

Mirror with [Mirroring Assist](#)

750-443-340

[Get a new code](#)

QR

Share this screen PRO

Allow up to 40 participants to view instantly from any device, anywhere

Start Sharing

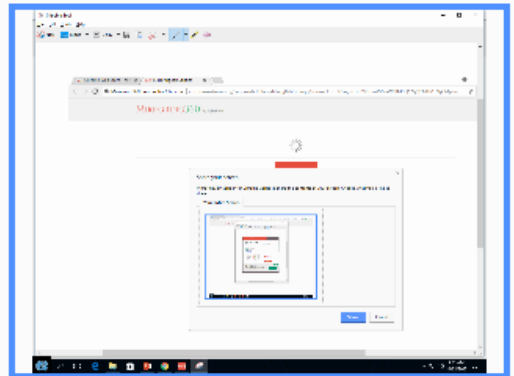
CONFIRM THE SCREEN YOU WISH TO SHARE



Share your screen

Mirroring360 Sender for Chrome wants to share the contents of your screen. Choose what you'd like to share.

Your Entire Screen



Share Cancel

CLICK SHARE TO BEGIN SHARING



** CHROME TAB MUST REMAIN ACTIVE TO CONTINUE MIRRORING **



Apple MacBook

Go to the **Mirroring Assist** page of the Mirroring360 website to download for Mac:
<https://www.mirroring360.com/mirroring-assist>

MIRROING360
by SplashTop

Home Products Pro^{NEW} How it works Pricing FAQ/Support Downloads Log In

Here are the steps to connect via Mirroring Assist:

1. Connect your device and computer to your school or corporate network (if they are on different networks / VLANS, please check with your IT to ensure they are route-able)
2. Ensure Mirroring360 is running on your Windows or Mac computer. You should see it in your system tray.
3. On the "General" tab, click on the "Mirroring Assist" button. The QR code window should pop up and the Mirroring ID underneath it.
4. On your device, follow the instructions below:

CLICK TO DOWNLOAD

Mac

1. Download and install Mirroring Assist for Mac.
2. Click the Mirroring Assist icon on the menu bar.
3. Click "Mirror Screen to Device" and enter Mirroring ID of the computer you want to mirror to in the box. Then click the "Mirror" button to start mirroring.

iPad/iPhone

Mac

Android

PC/Chromebook

Mirror Screen to a Device

sjc-t530

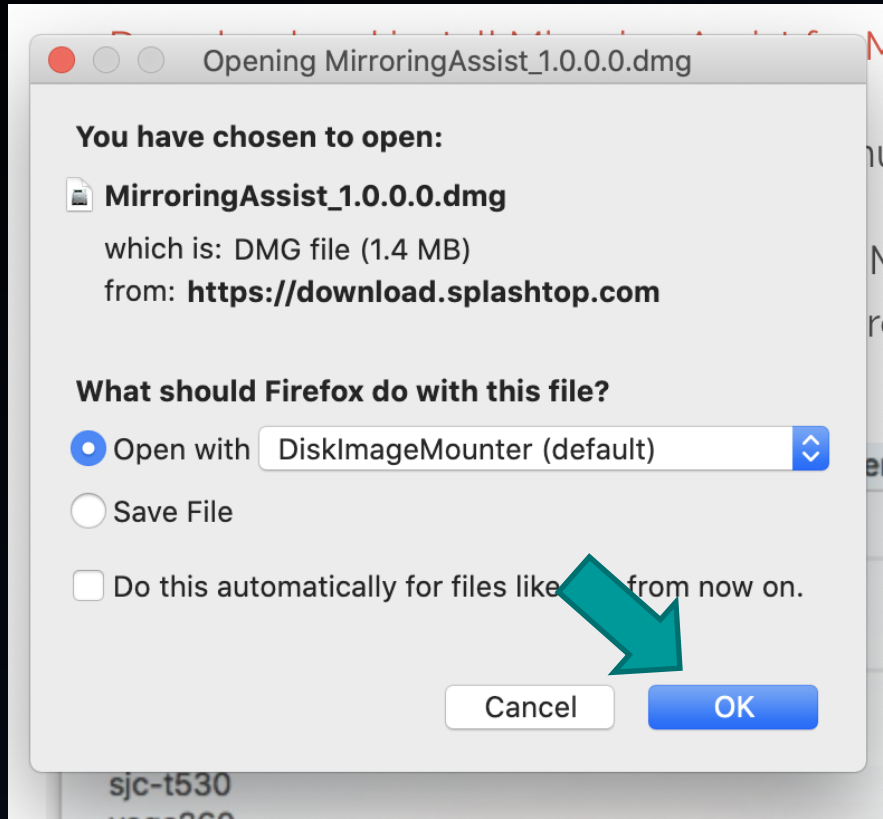
0 SJC - Sales Screen

0-sjc-ConfRm

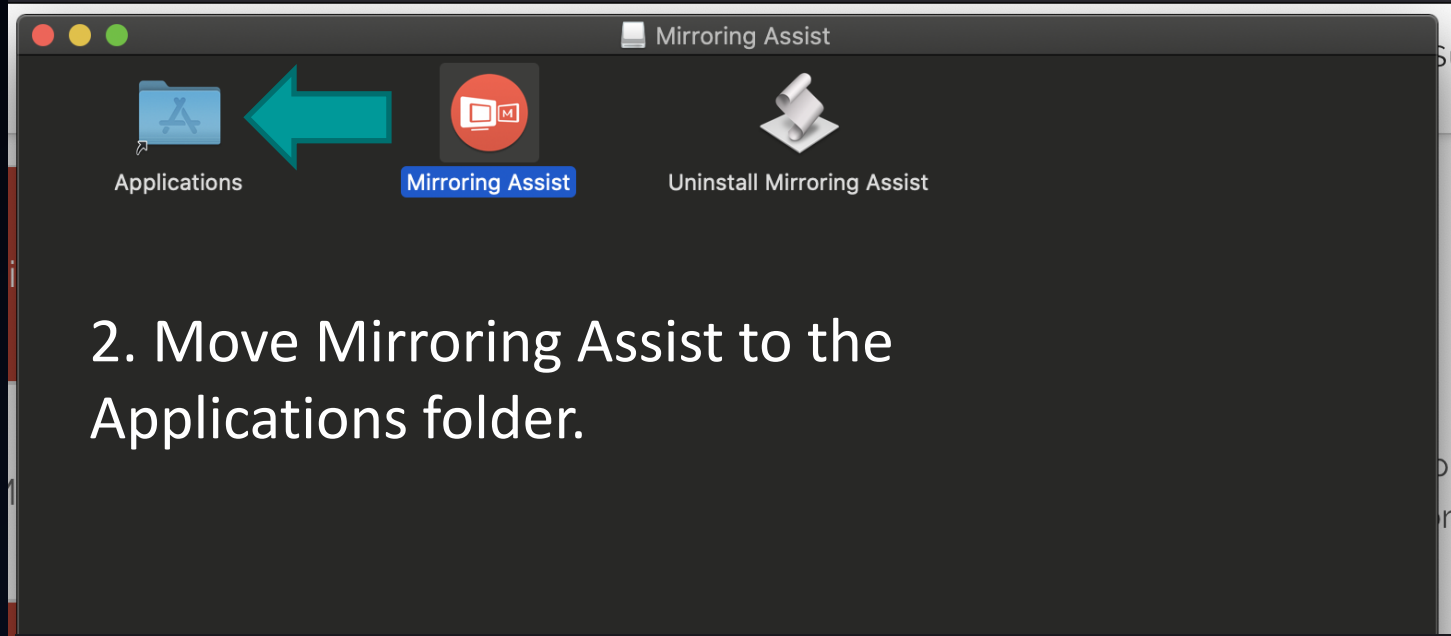
sjc-t530

yoga260

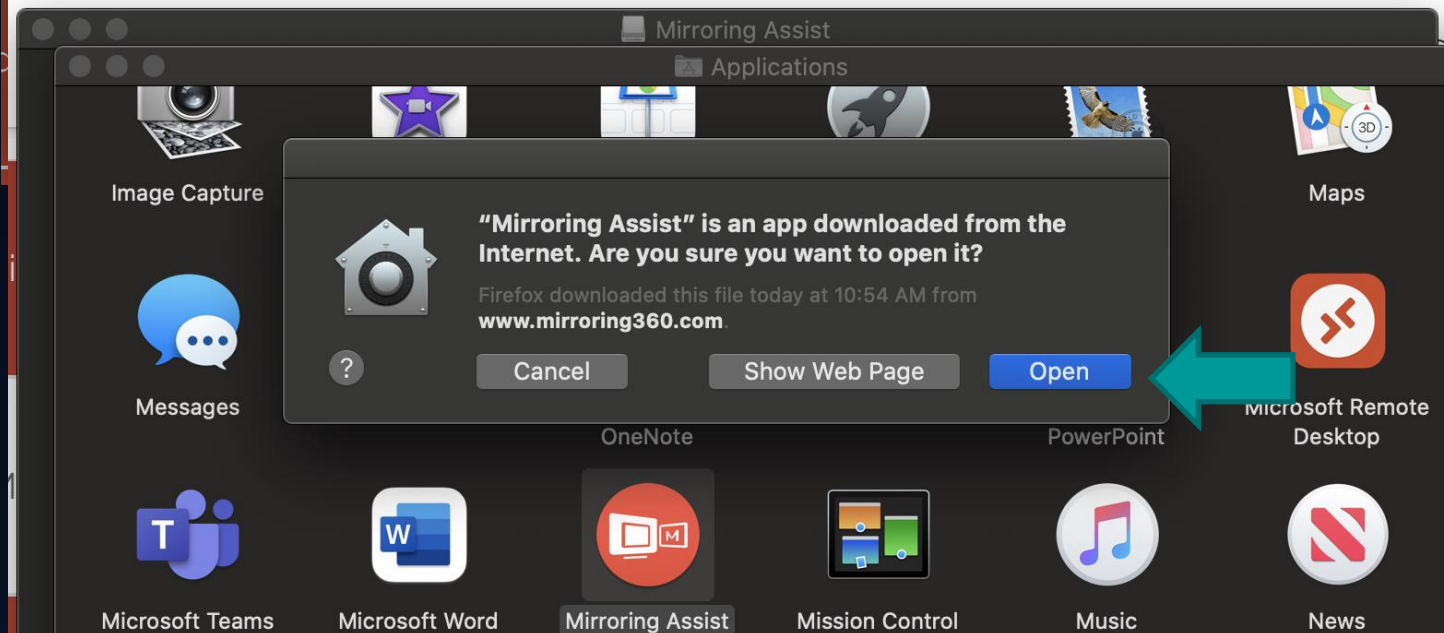
1. Download Mirroring Assist



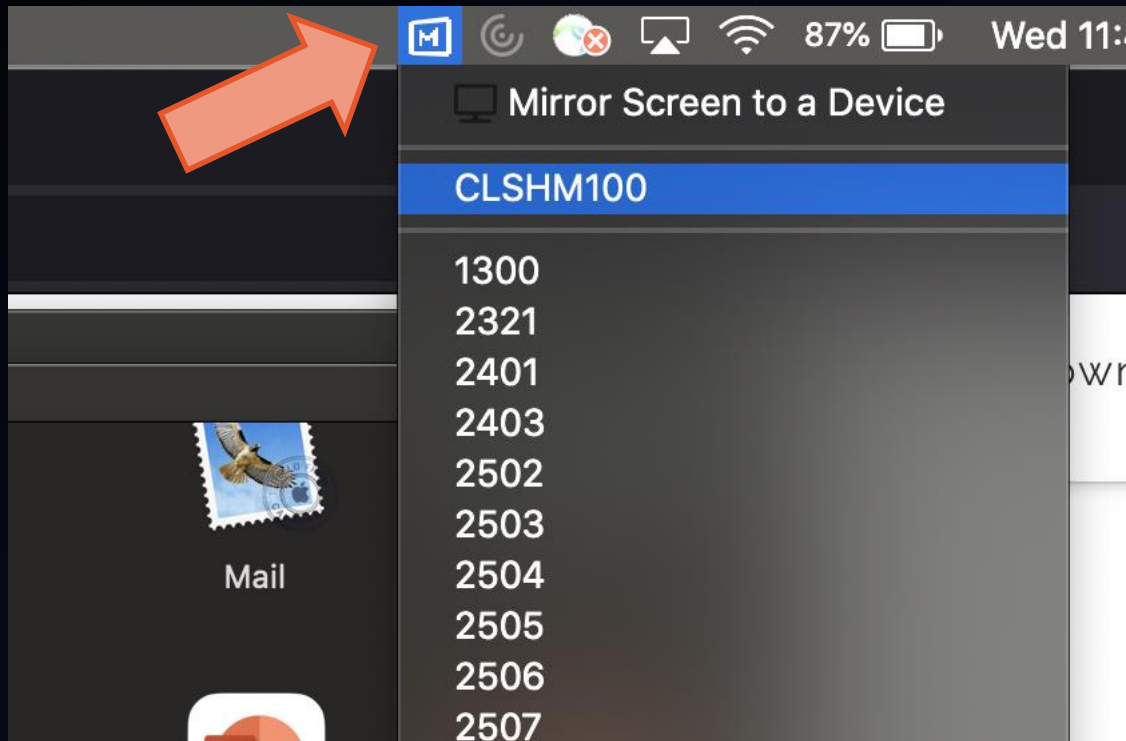
3. Open Mirroring Assist from the Applications folder.



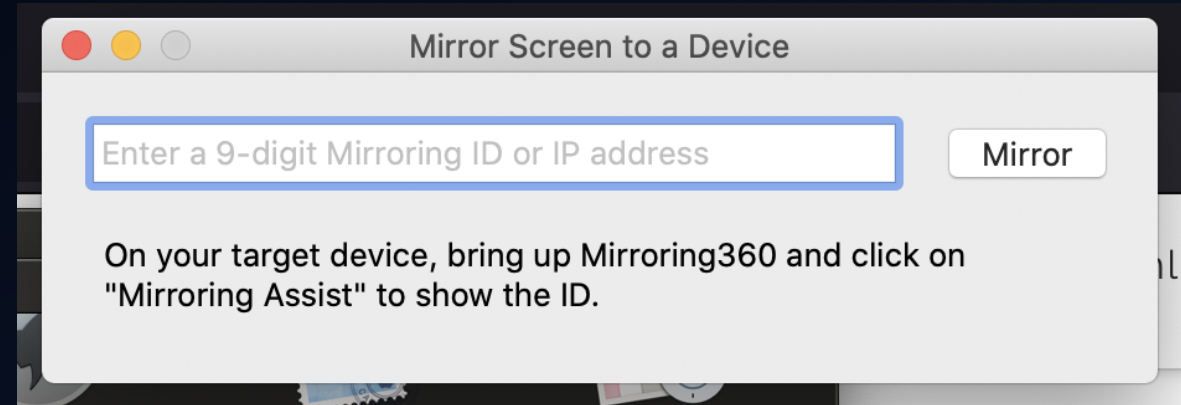
2. Move Mirroring Assist to the Applications folder.



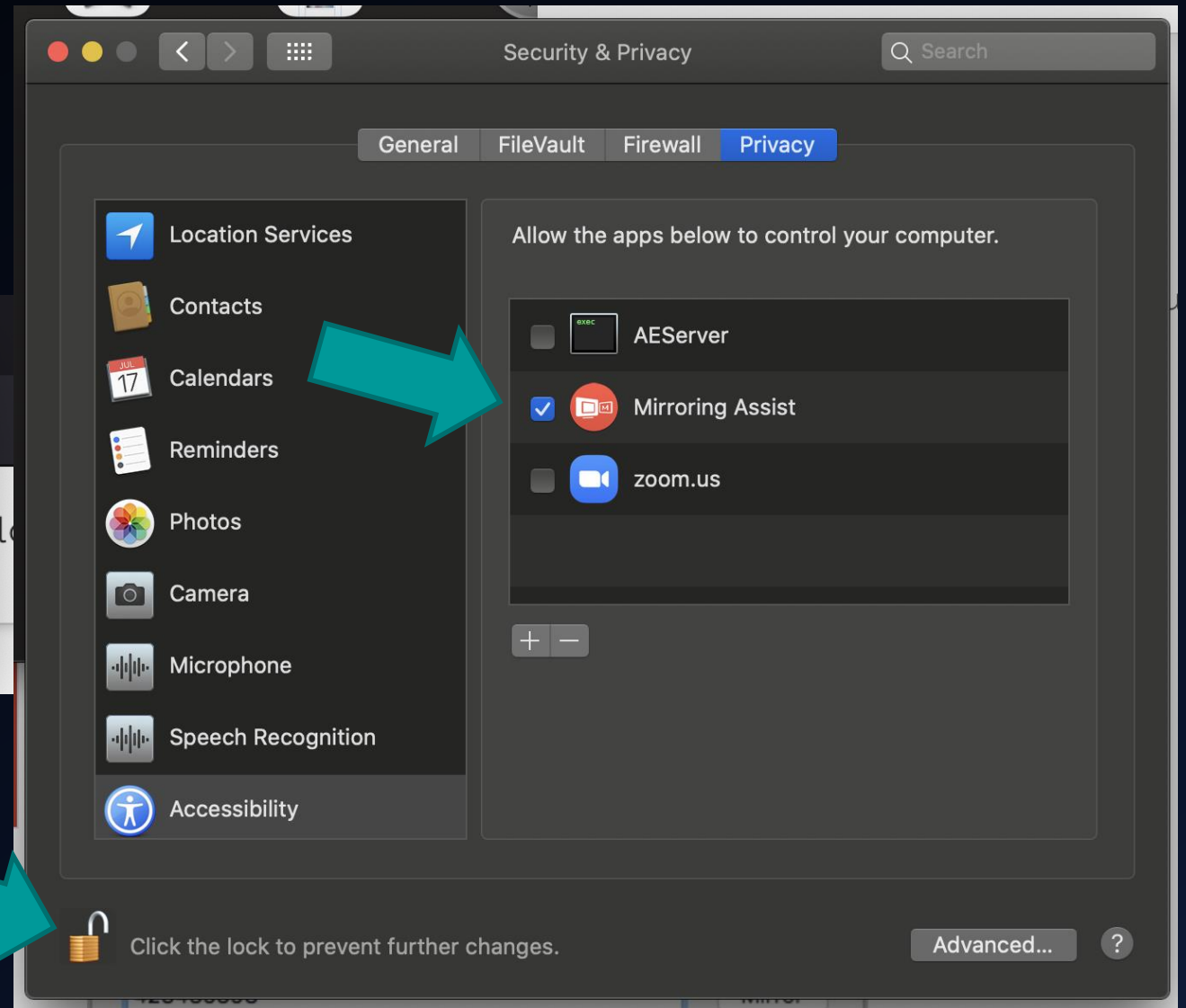
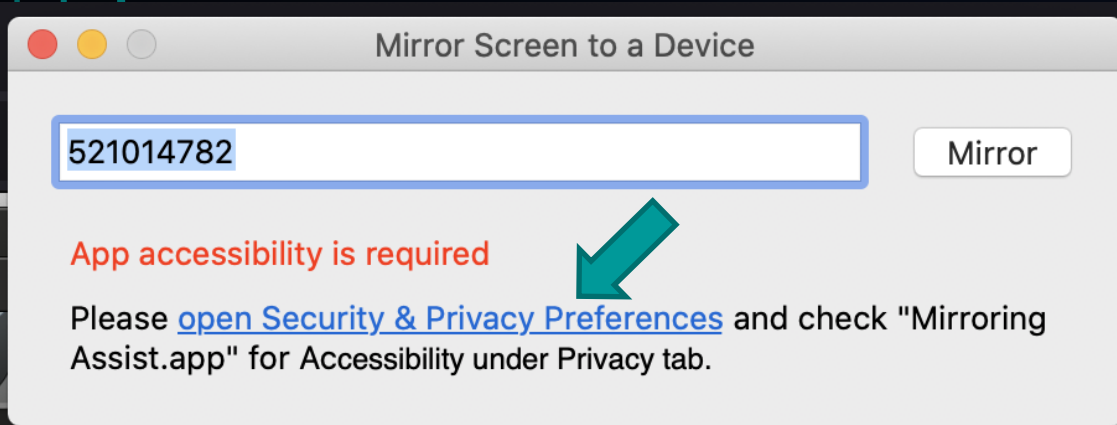
4. Mirroring Assist will appear on the top bar.



5. Select 'Mirror Screen to a Device' then enter the 9 digit code.

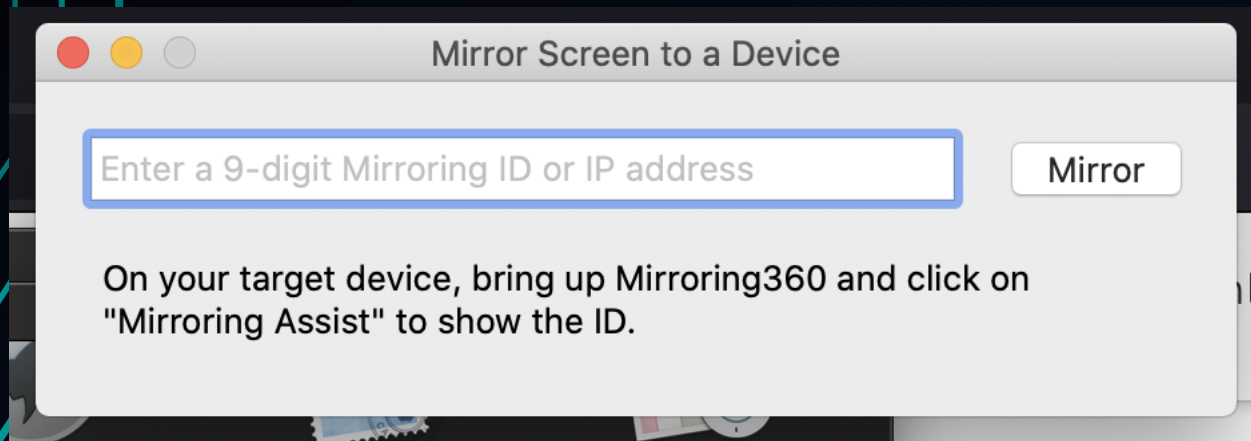


6. Click on the blue link and then give Mirroring Assist the App Accessibility it requires.

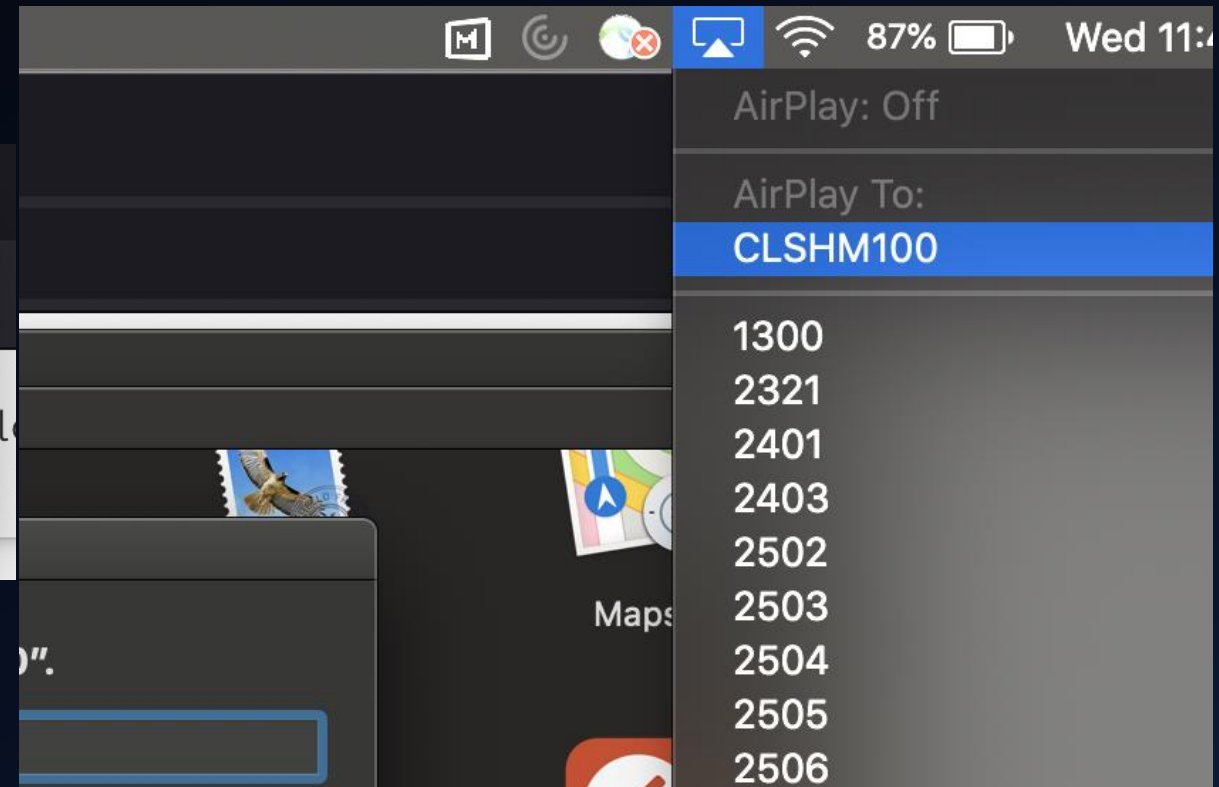


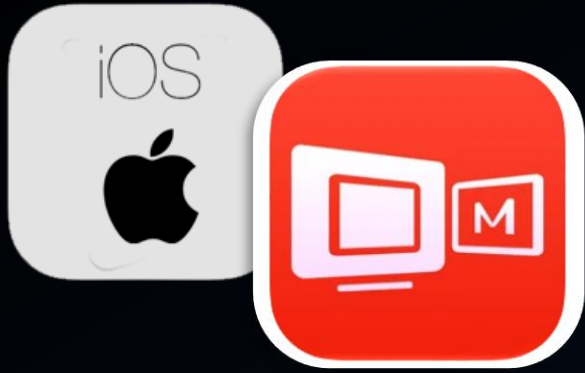
You need to unlock to change the setting and relock when done

6. Try mirroring again, this will open your Airplay device list.



7. Find and select the classroom you are connecting to.



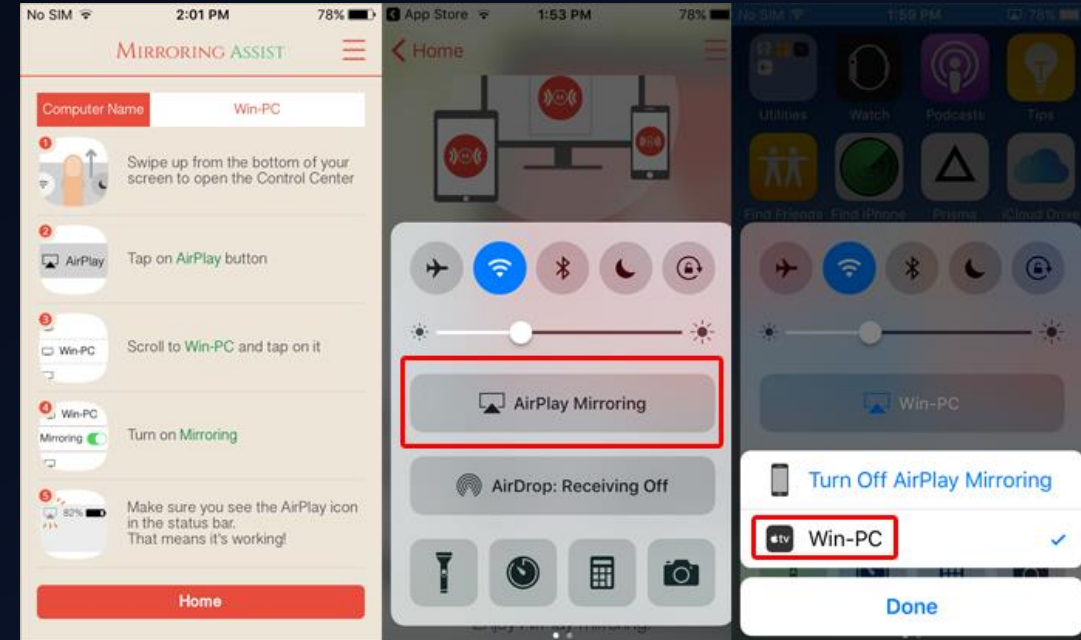
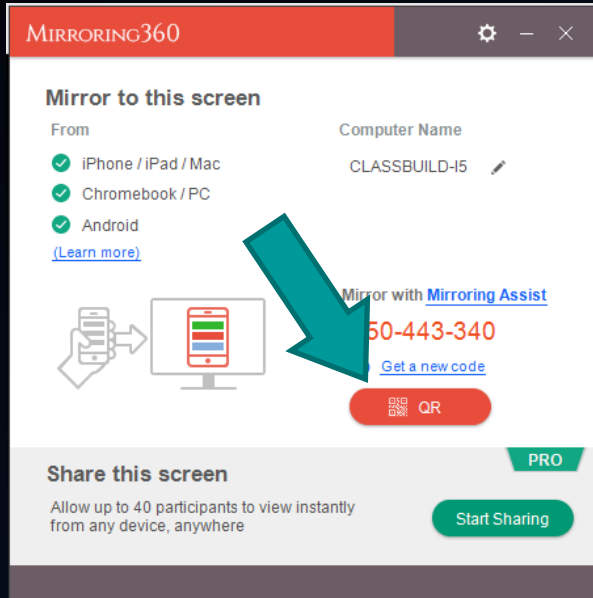


If you are using an iPad or iPhone go to the Apple App Store and download the **Mirroring Assist** app.

CLICK THE QR CODE BUTTON ON MIRRORING360 ON THE IN HOUSE COMPUTER

SCAN THE QR CODE USING THE MIRRORING ASSIST APP

ENGAGE AIRPLAY MIRRORING

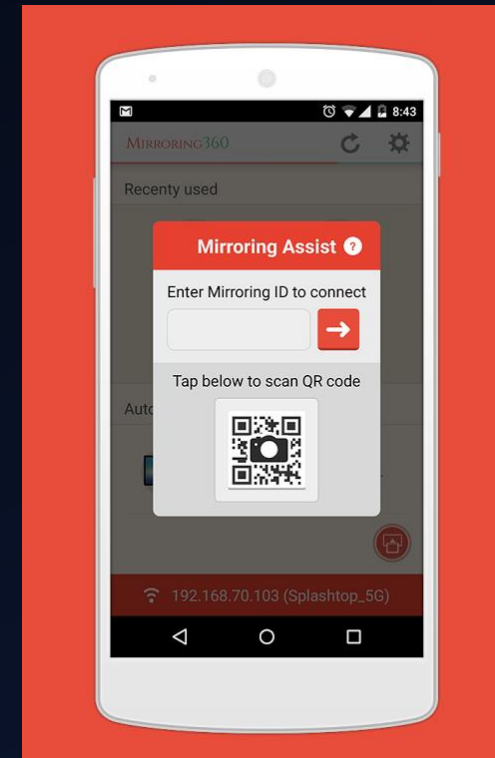
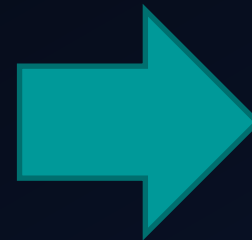
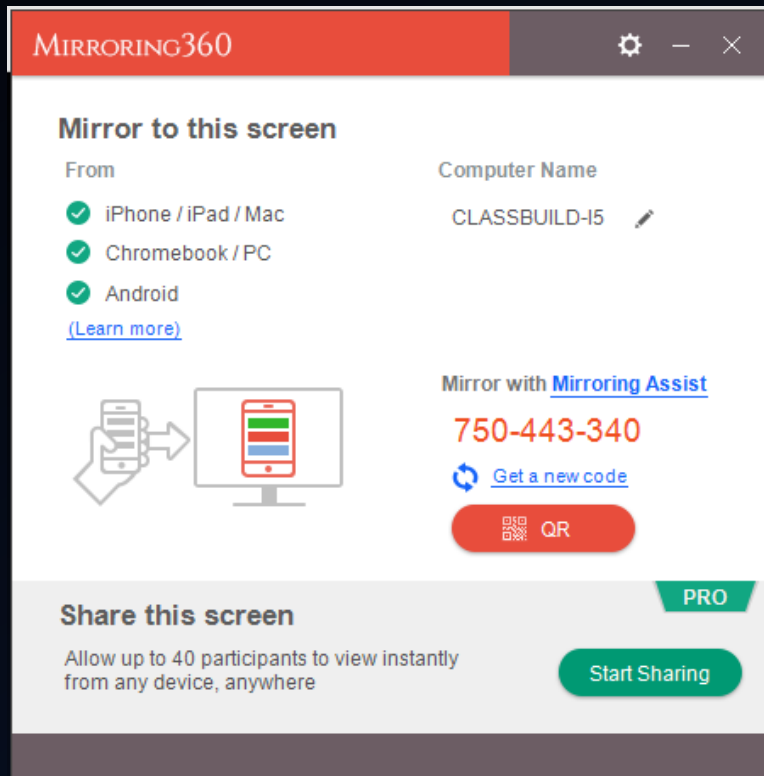




For Android Device go to the Google Play Store and download the **Mirroring360 Sender Basic** app.

USE EITHER QR CODE OR 9 DIGIT CODE ON MIRRORING360 INTERFACE

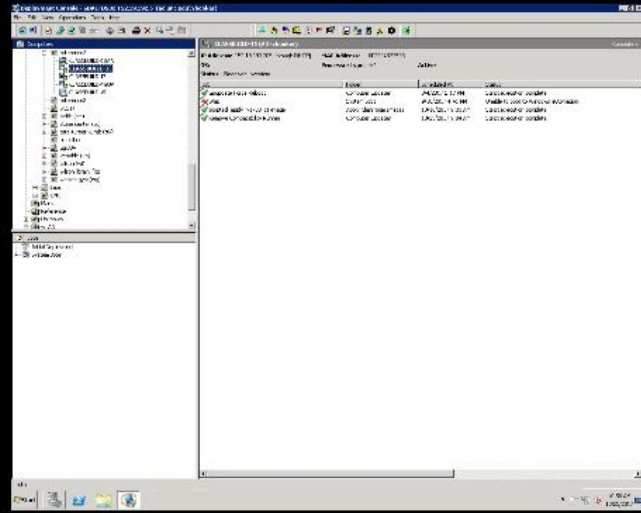
ENTER 9 DIGIT CODE INTO THE APP OR SCAN QR CODE TO CONNECT



1

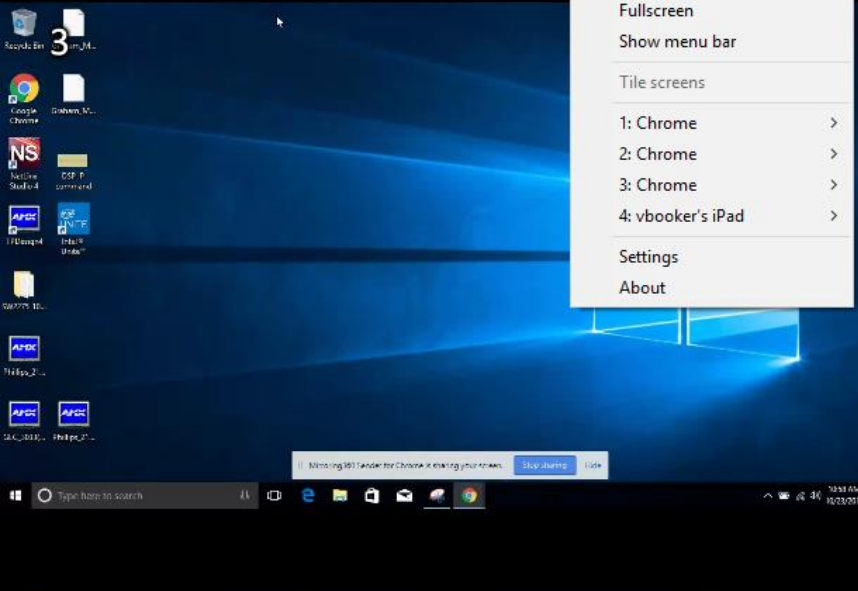


2

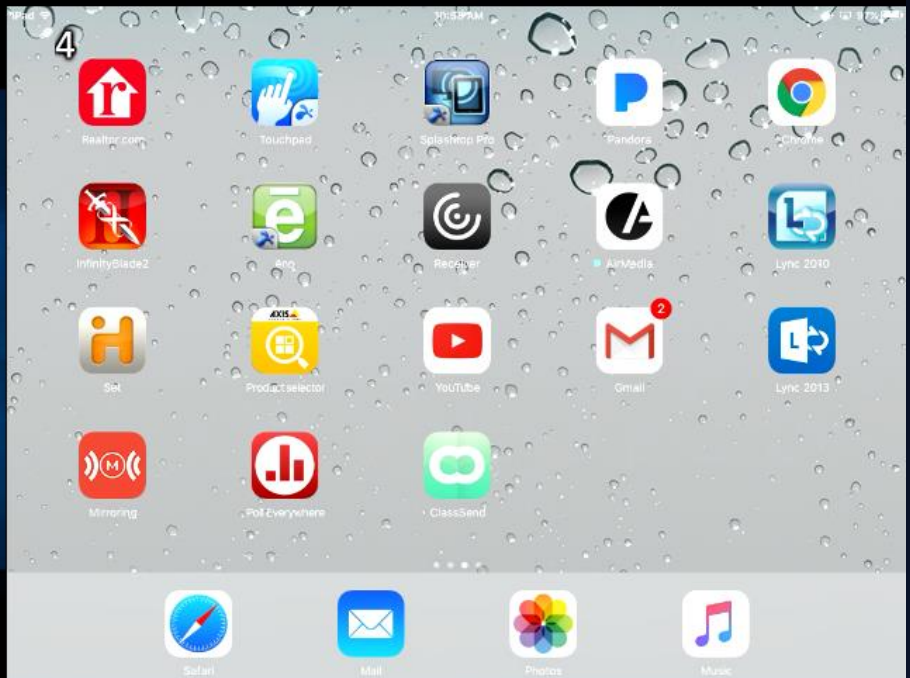


Mirror up to 4 devices simultaneously

3



4



Right click anywhere to select a device to display full screen or record a device

Mirror to this screen

- From
- ✓ iPhone / iPad / Mac
 - ✓ Chromebook / PC
 - ✓ Android
- [\(Learn more\)](#)

Computer Name
CLASSBUILD-15

Mirror with [Mirroring Assist](#)

750-443-340

[Get a new code](#)

QR



Share this screen

Allow up to 40 participants to view instantly from any device, anywhere

Start Sharing

PRO



SHARE THE CLASSROOM SCREEN WITH UP TO 40 STUDENTS

Mirror to this screen

- From
- ✓ iPhone / iPad / Mac
 - ✓ Chromebook / PC
 - ✓ Android
- [\(Learn more\)](#)

Computer Name
CLASSBUILD-15

Share this screen

Allow up to 40 participants to view instantly from any device, anywhere

Stop Sharing

PRO

Anyone with this link can view

<http://viewit.at/750443340>

- Copy link
- Email link

0



Provide link while sharing is enabled

HAVING TECHNICAL DIFFICULTIES?

PICK UP THE **HOTLINE PHONE**
LOCATED IN THE CLASSROOM OR
CALL **919-962-6702**

